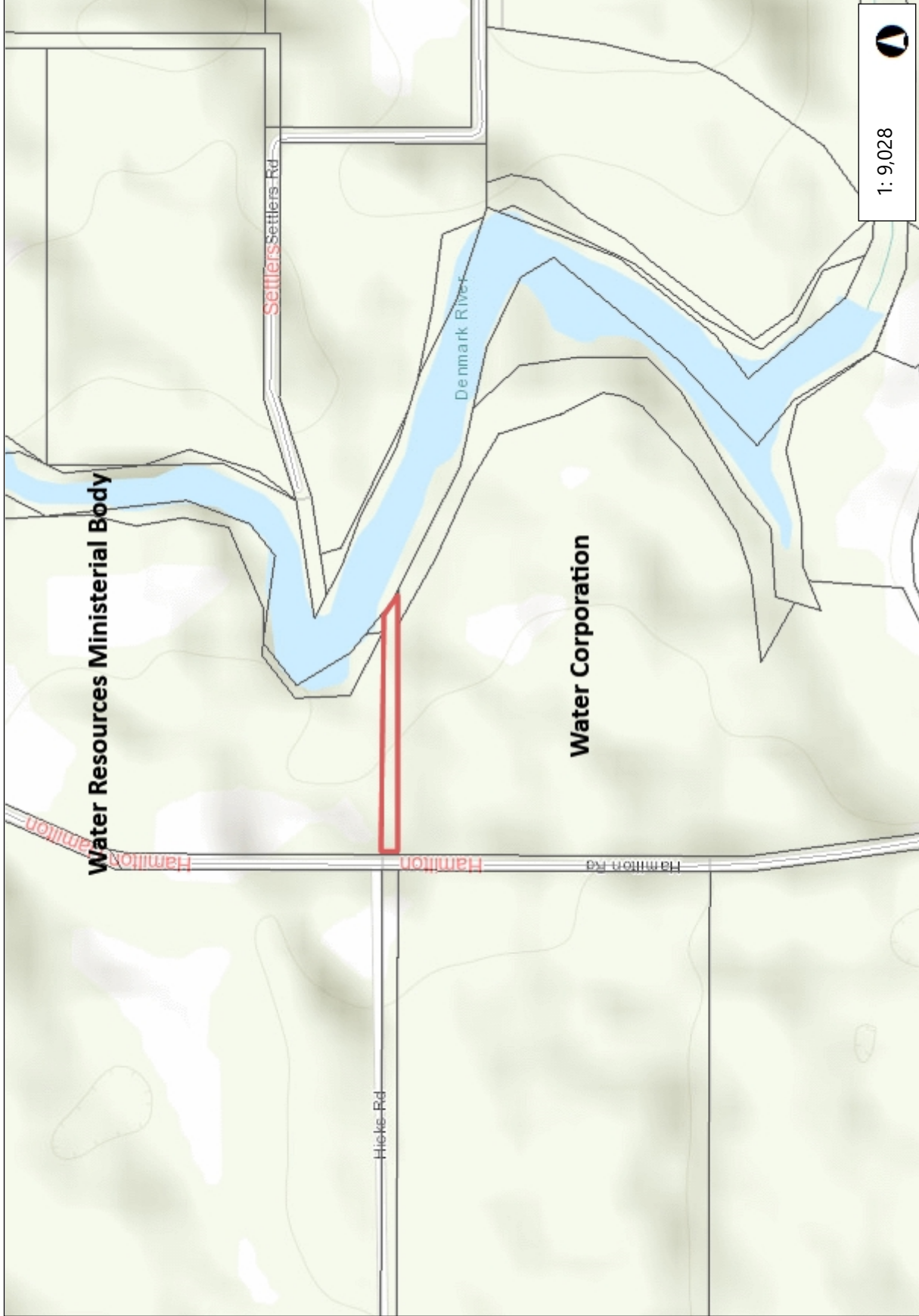




Portion of Hicks Road - Application for Closure



1: 9,028



This map is a user generated static output from an internet mapping site and is for reference only. Data layers that appear on this map may or may not be accurate, current, or otherwise reliable.

15 JUNE 2021 - ATTACHMENT 9.1.1

THIS MAP IS NOT TO BE USED FOR NAVIGATION



Legend

- Roads - State Roads
- Roads - Major Roads
- Roads - Minor Roads
- Land Tenure
- Cadastre

Notes

Author:
Recipient:

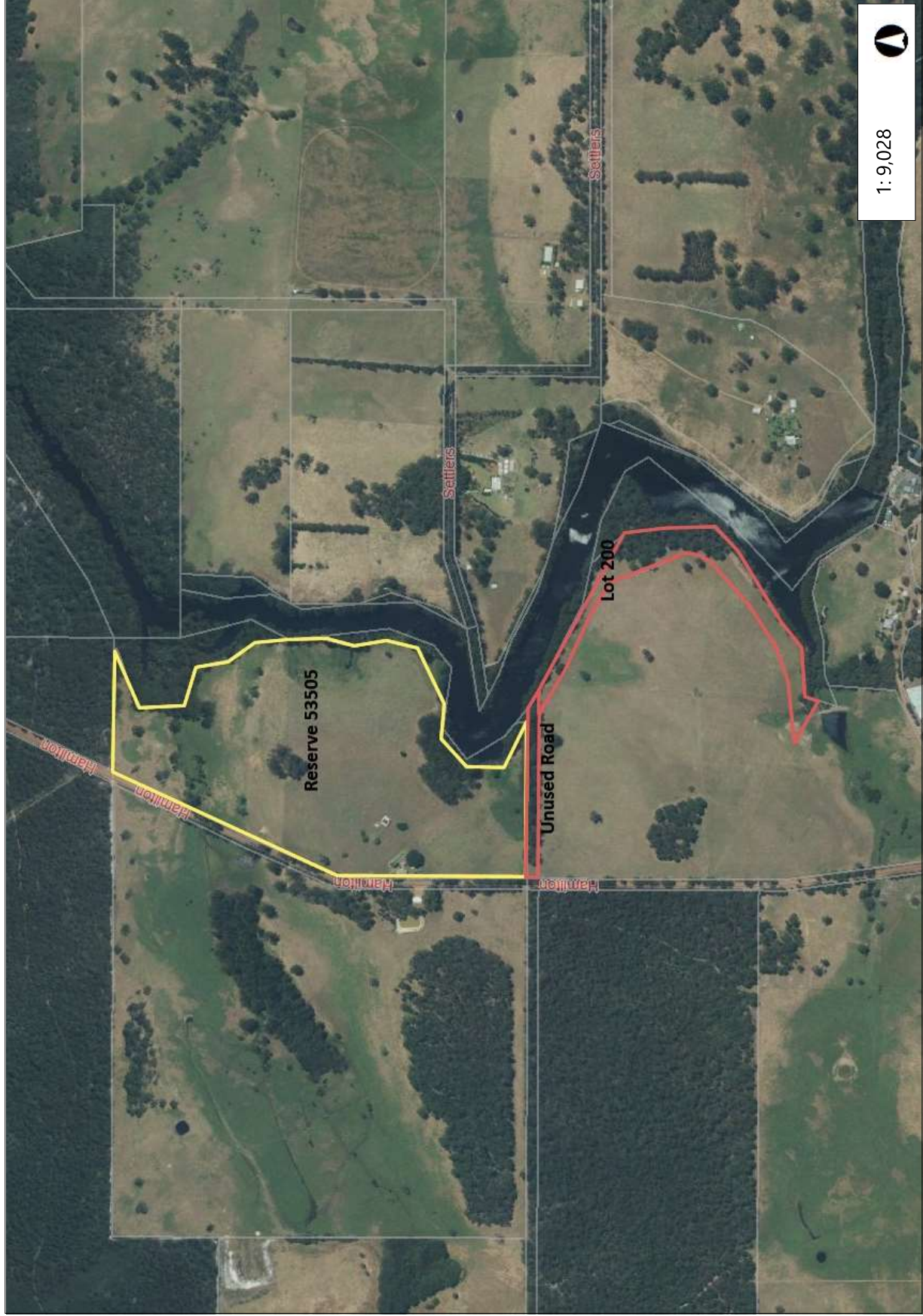


Proposed Land Assembly



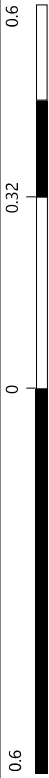
Legend

- Roads - State
- Roads
- Roads - Major
- Roads
- Roads - Minor
- Land Tenure



1:9,028

0.6 Kilometers



WGS_1984_Web_Mercator_Auxiliary_Sphere

© Government of Western Australia, Department of Water and Environmental Regulation.

This map is a user generated static output from an Internet mapping site and is for reference only. Data layers that appear on this map may or may not be accurate, current, or otherwise reliable.

THIS MAP IS NOT TO BE USED FOR NAVIGATION

Notes

Author:

Recipient: